







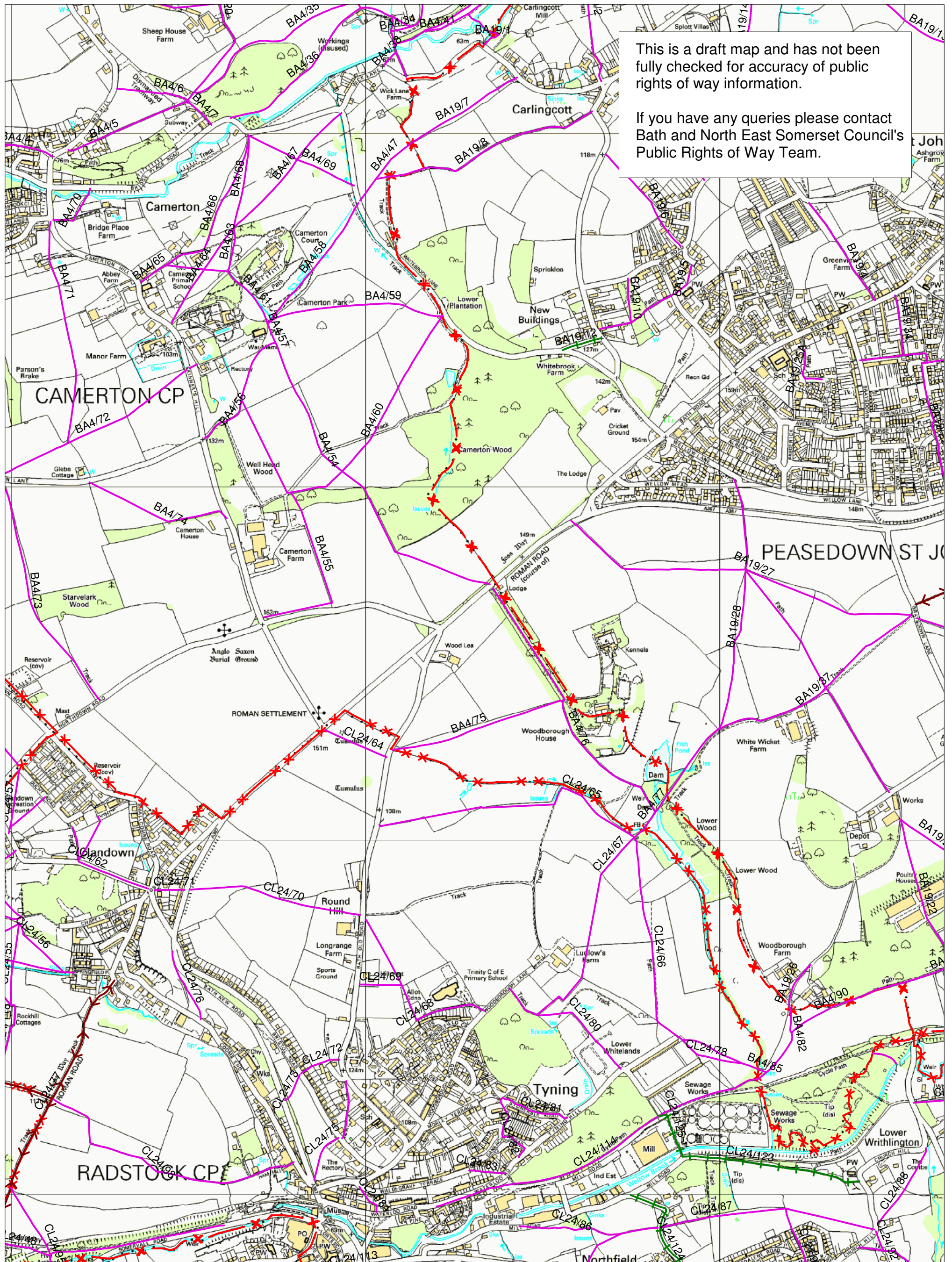
Camerton: South

Parish Working Map

Scale 1:10000

- Public footpath 
- Public bridleway 
- Restricted byway 

- Byway Open to All Traffic 
- Permissive Path 
- Parish Boundary 



This is a draft map and has not been fully checked for accuracy of public rights of way information.

If you have any queries please contact Bath and North East Somerset Council's Public Rights of Way Team.